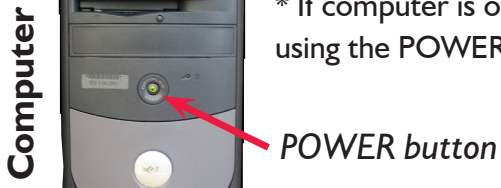


HOW TO USE THE MULTIMEDIA CLASSROOM

START UP

1. FOLLOW THE ON SCREEN INSTRUCTIONS TO LOG ON TO THE COMPUTER

* If computer screen is dark, press any key on the keyboard to "wake up".
* If computer is off, turn on using the POWER button.



2. TURN THE SYSTEM ON

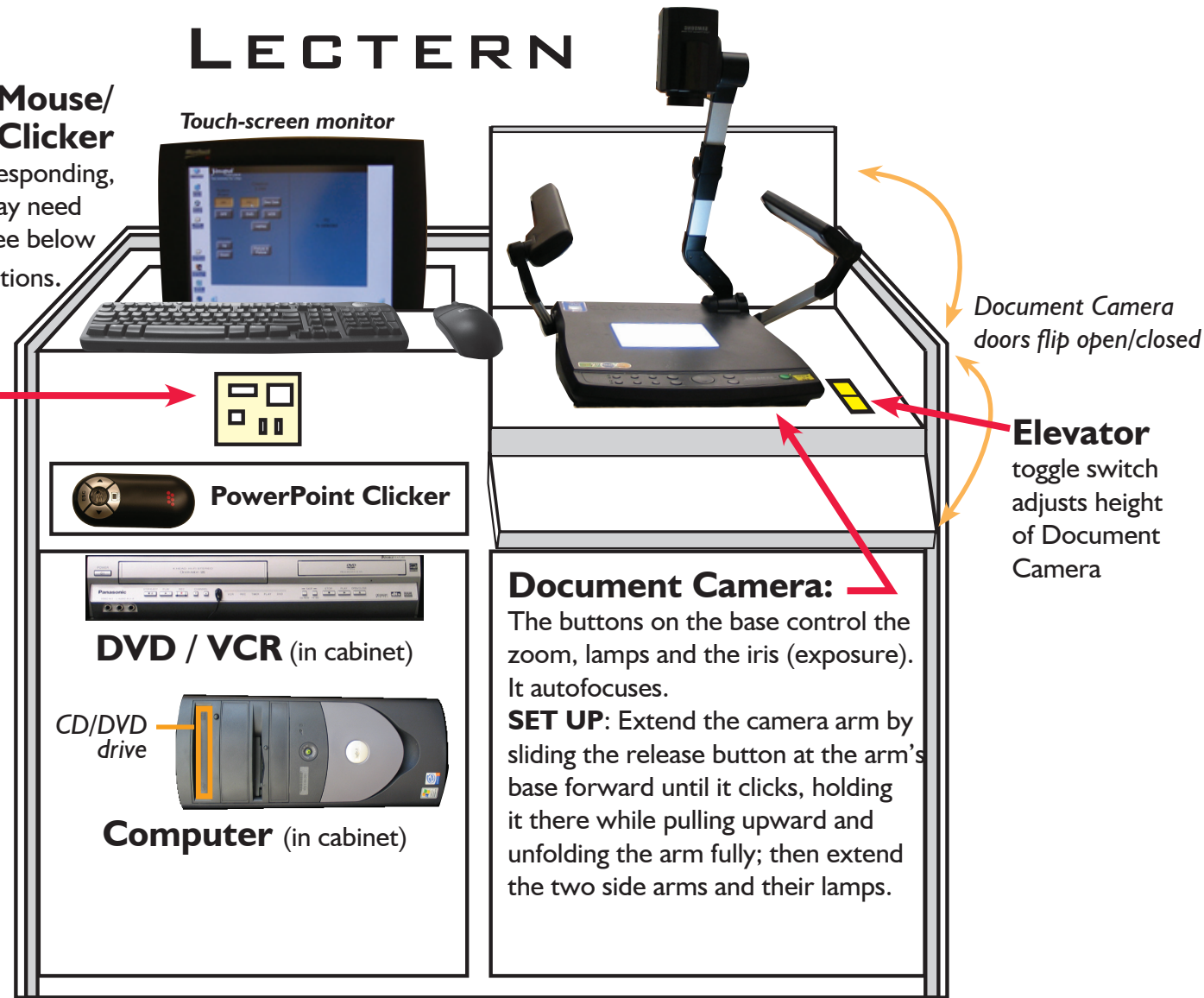


The "ON" button is located in the upper left corner of the Control Panel on the computer desktop. All devices should turn on (projector, document camera and DVD/VCR).

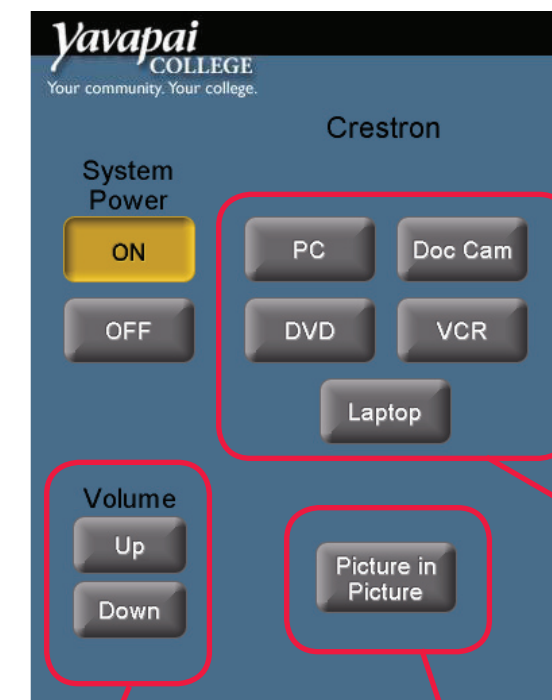
Wireless Mouse/Keyboard/Clicker

If these aren't responding, the batteries may need replacement. See below "synching" directions.

PORTS
•VGA
•Data
•USB
•Power



CONTROL PANEL



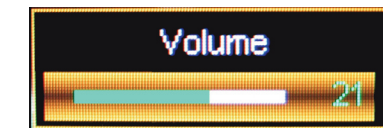
The Control Panel is always a part of the desktop. By minimizing active



windows you will be able to return to it.

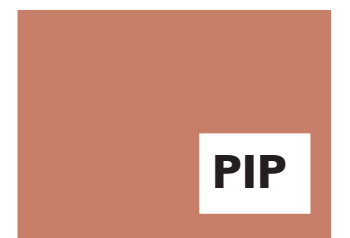
Buttons activate the five devices. Controls for each device appear on the right hand side.

Volume control:



pressing the buttons changes the level incrementally with each press (or press and hold down). Level is indicated in the corner of the projected image.

Picture in Picture (PIP) displays the smaller image of another device on top of the currently selected device. *Experimentation is recommended before using this feature.*



ENDING CLASS

1. TURN THE SYSTEM OFF using the control panel
2. LOG OFF THE COMPUTER. Go to "Start" and choose "Log Off".
Please Do not shut down.

LAPTOP CONNECTION

1. Plug the VGA cable between the VGA port on the front of the lectern and the VGA port on the back of your laptop, commonly marked with this symbol.
2. For Internet connection, plug the Ethernet (Data) cable between the Data port on the front of the lectern and the Data port on your laptop, commonly marked with this symbol.
3. Turn laptop on.
4. Press "Laptop" on control panel.
NOTE: PC laptops may need their own Fn+Fkey combination pressed to display.

CALL HELP DESK IF :

- The projector shows nothing - but please give it a chance, it starts slowly. (*don't worry about filter cleaning alerts*)
- Wireless keyboard or mouse fails
- You can't log on to the YC Network with your username/password
- Need batteries
- Other unpredictable problem... (*wild mice running around scaring people*)

Need Help?!

HELP DESK
Dial (776)-2168