

START UP

1. FOLLOW THE ON SCREEN INSTRUCTIONS TO LOG ON TO THE COMPUTER

Computer Tower



* If computer screen is dark, press any key on the keyboard to "wake up".
* If computer is off, turn on using the POWER button.

POWER button

2. TURN THE SYSTEM ON



The "ON" button is located in the upper left corner of the control panel. All devices should turn on (projector, document camera and DVD/VCR).

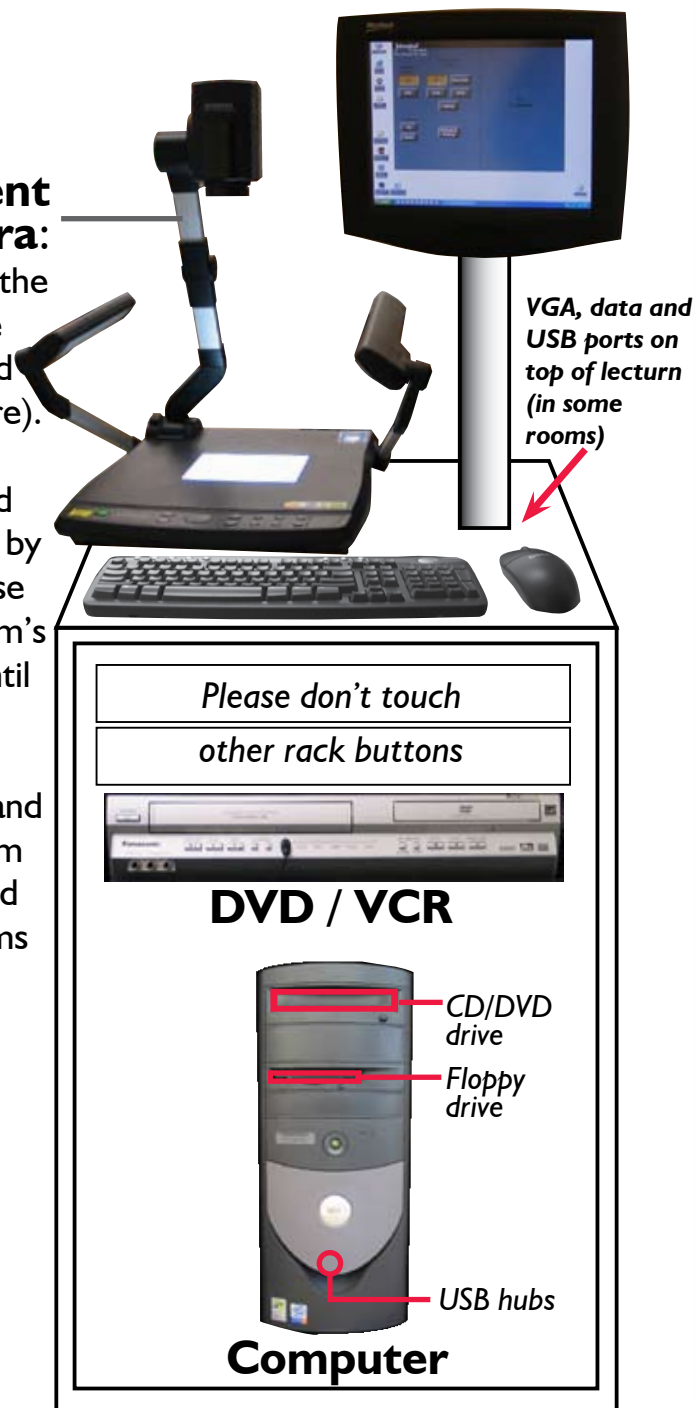
LECTURN

Touch screen monitor

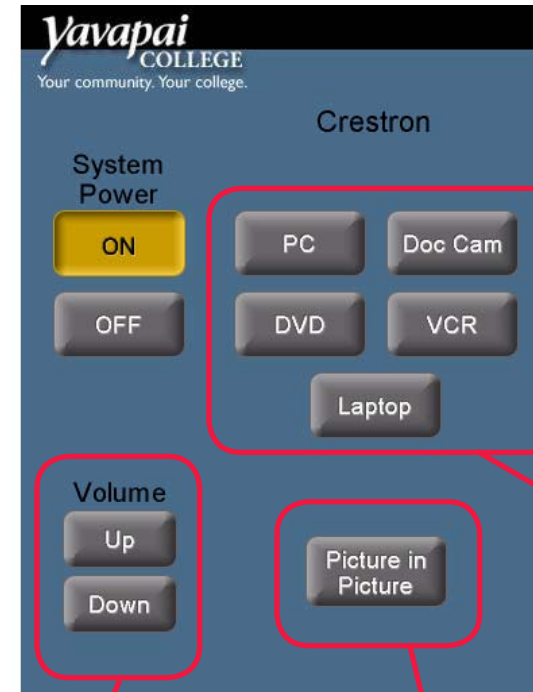
Document Camera:

The buttons on the base control the zoom, lamps and the iris (exposure). It autofocuses.

SET UP: Extend the camera arm by sliding the release button at the arm's base forward until it clicks, holding it there while pulling upward and unfolding the arm fully; then extend the two side arms and their lamps.



CONTROL PANEL



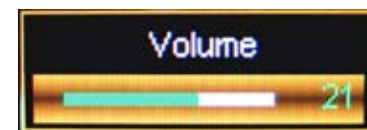
The Control Panel is always a part of the desktop. By minimizing active



windows you will be able to return to it.

Buttons activate the five devices, and controls for each appear on the right hand side. Laptop connection is explained below.

Volume control: pressing the buttons changes the level incrementally with each press (or press and hold down). Level is indicated in the corner of the projected image.



Picture in Picture displays the smaller image of another device on top of the currently selected device. Experimentation is recommended before using this feature.

ENDING CLASS

1. TURN THE SYSTEM OFF using the control panel
2. LOG OFF THE COMPUTER. Go to "Start" and choose "Log Off".

Need Help?!

HELP DESK
Dial (776)-2168

Mon. to Thurs. 7:00 am - 10:00 pm

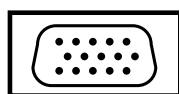
Friday 7:00 am - 9:00 pm

Saturday 8:00 am - 5:00 pm



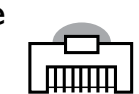
LAPTOP CONNECTION

1. Plug the VGA cable on top of the lecturn in to the VGA port on the back of your laptop, commonly marked with this symbol. →

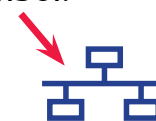


VGA cable

2. Plug the Ethernet cable in to the ethernet port on your laptop, marked with this symbol. →



Ethernet cable



3. Turn your laptop computer on.
4. Press the "Laptop" button on the control panel.

NOTE: PC laptops may need their own Fn+Fkey combination pressed to output display.